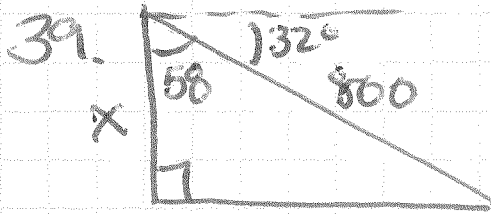
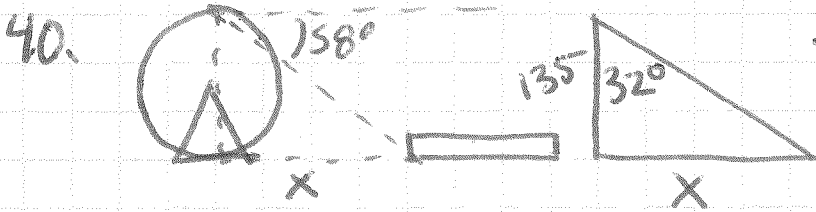


228: 39-44, 46, 55-56, 103-105



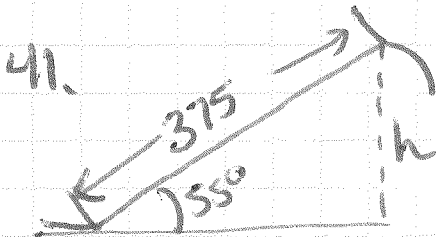
$$\cos 58^\circ = \frac{x}{800}$$

$$x = 424 \text{ ft}$$



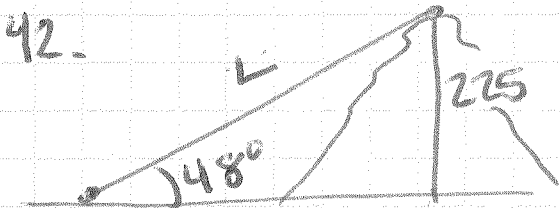
$$\tan 32^\circ = \frac{x}{135}$$

$$x = 84 \text{ m}$$



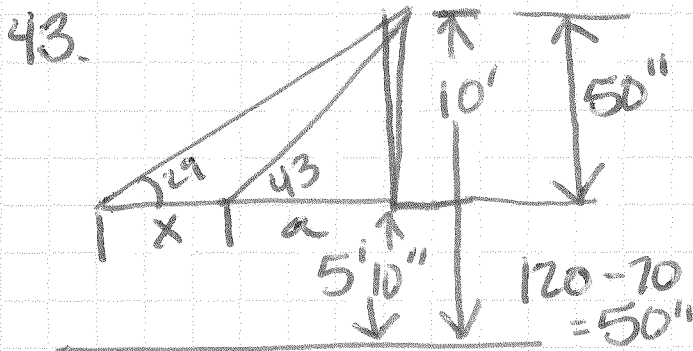
$$\sin 55^\circ = \frac{h}{375}$$

$$h = 307 \text{ ft}$$



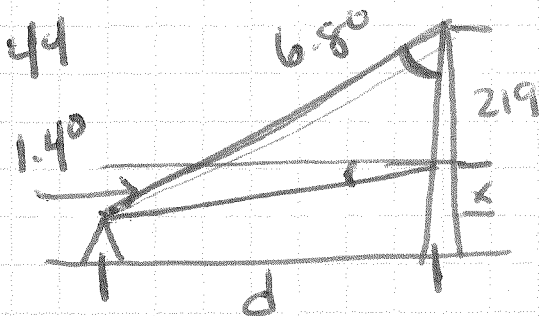
$$\sin 48^\circ = \frac{225}{L}$$

$$L = 303 \text{ m}$$



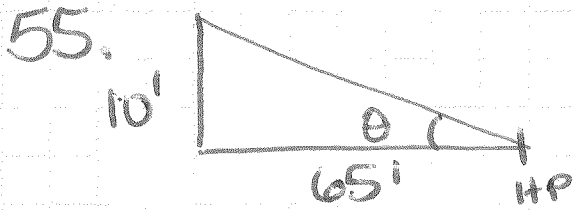
$$\tan 43^\circ = \frac{50}{a} \quad \tan 29^\circ = \frac{50}{x+a}$$

$$x = 3.1 \text{ ft}$$



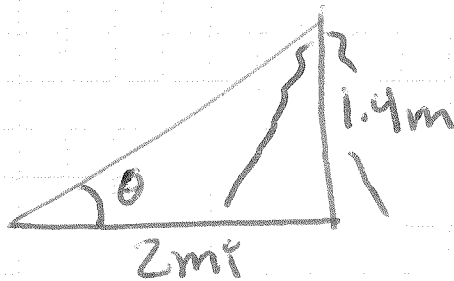
$$\text{distance} = 2310 \text{ m}$$

46. 500 ft



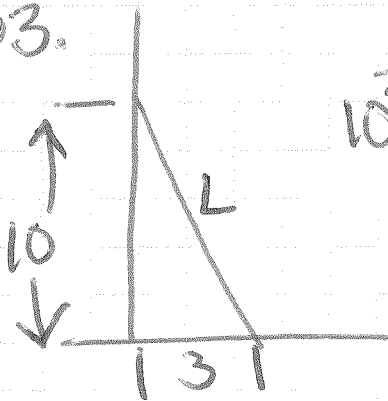
$$\tan \theta = \frac{10}{65} \quad \theta = 9^\circ$$

56.



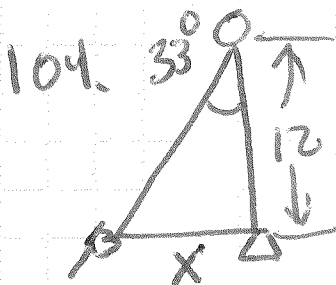
$$\tan \theta = \frac{1.4}{2} \quad \theta = 35^\circ$$

103.



$$10^2 + 3^2 = L^2$$

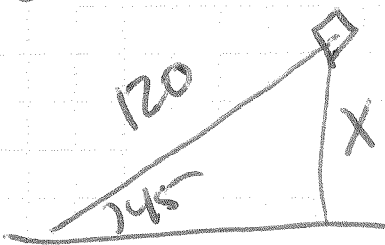
$$L = 10.44 \text{ G}$$



$$\tan 33^\circ = \frac{x}{12}$$

$$x = 7.8 \text{ ft A}$$

105



$$120 = x\sqrt{2}$$

$$x = 60\sqrt{2} \text{ G}$$