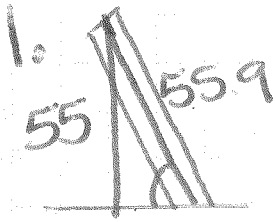
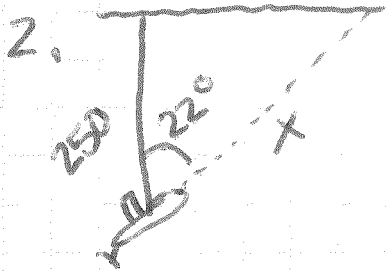


Word Problems



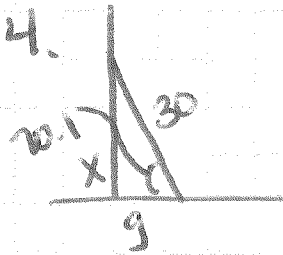
$$\sin \theta = \frac{55}{55.9}$$

$$\sin^{-1} \frac{55}{55.9} = \boxed{10.3^\circ}$$



$$\cos 22^\circ = \frac{250}{x}$$

$$\boxed{x = 269.6 \text{ m}}$$

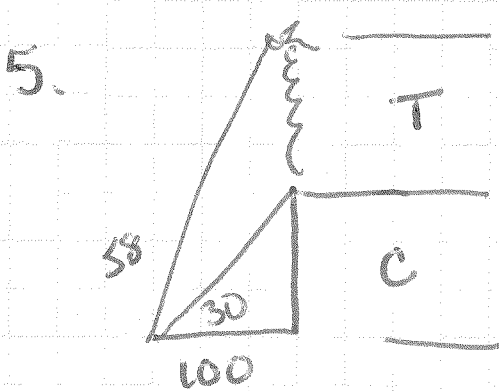


$$\sin 70.1 = \frac{x}{30}$$

$$\boxed{x = 28.2 \text{ feet}}$$

$$\cos 70.1 = \frac{g}{30}$$

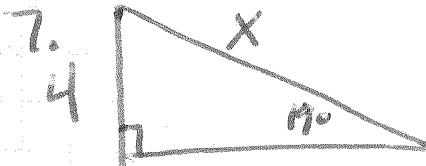
$$\boxed{g = 10.2 \text{ ft.}}$$



$$\tan 30 = \frac{c}{100}$$

$$\boxed{c = 102.3 \text{ feet}}$$

$$\tan 58 = \frac{t+c}{100}$$



$$\sin 19 = \frac{4}{x}$$

$$x = 12.3 \text{ feet}$$