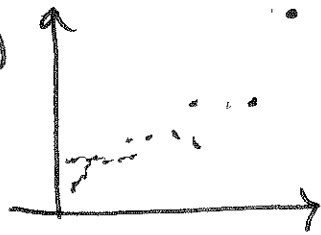


11.7 Day 2 WS

2. a)



a. weak / positive

b. $r = .794$ medium relation, positive

c. $y = 17.282x + 93.765$

Slope \rightarrow each gram of fiber adds about 17 calories

y-intercept \rightarrow a serving of 0 fiber cereal still has 94 calories

d. 4.5 g fiber \rightarrow 171.534 calories

7 g. fiber \rightarrow 214.739 calories

e.



I say not really -

too many points below the line \rightarrow possibly another shape.

A.



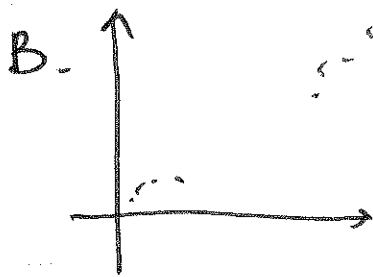
a) med. positive

b) $r = .452$ weak positive

c) $y = .063x + 1.893$

a person who gets 0 on their ACT still gets a 1.9 GPA, and GPA goes ~~up~~ up a point for each $\frac{1}{2}$ point on ACT


d.e. points are randomly distributed, but far away from the line



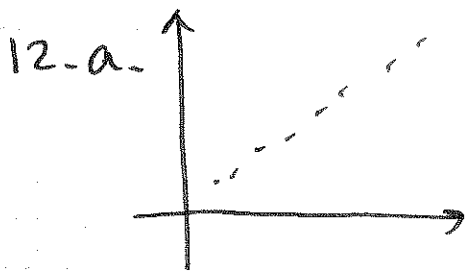
- a) Strong, positive linear
- b) $r = .97$ Strong, positive
- c) $y = 2.312x - 13.959$

clients who weren't contacted at all had a negative affect on sales \rightarrow i.e., there needs to be ~~an~~ contact for any sales.

every time a sales man contacts clients, their expected sales go up \$2,312.

d.e.  mostly random, above & below

7. b 8. c 9. d 10. a



a. $r = .993$

c. Sales for 15 ads
 $\hat{y} = 1.232x + .212$
 $\hat{y} = 18.692$

Cost 15 ads = \$7500

Sales for 18 ads
 $\hat{y} = 22.388$

Cost 18 ads = \$9000

$P(15) = 18.692 - 7.5 = \$11,192$

$P(18) = 22.388 - 9 = \$13,388$

Profits should increase by \$2,196.