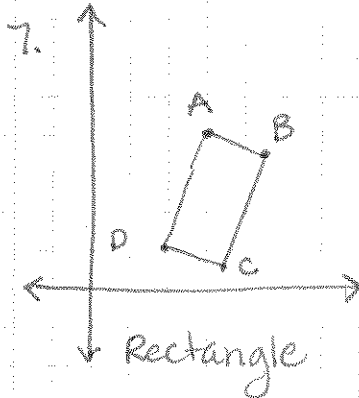


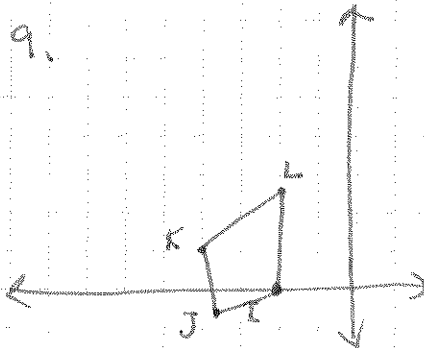
504: 1-3, 5-6, 7, 9

1. 5 units 2. 45 units 3. 34 units

5. 52.4 units 6. 180 degrees



AB	$\sqrt{10}$	$-\frac{1}{3}$
BC	$\sqrt{40}$	3
CD	$\sqrt{10}$	$-\frac{1}{3}$
DA	$\sqrt{40}$	3



IJ	$\sqrt{10}$	$\frac{1}{3}$
JK	$\sqrt{10}$	$-\frac{1}{3}$
KL	$\sqrt{25} = 5$	$\frac{2}{3}$
LI	$\sqrt{25} = 5$	Und.

5. (2, 4) (8, 12) (24, 0)

perimeter

$$d_1 = \sqrt{6^2 + 8^2} = 10$$

$$d_2 = \sqrt{12^2 + 16^2} = 20$$

$$d_3 = \sqrt{22^2 + 4^2} = \underline{22.36}$$

$$\underline{\underline{52.4}}$$