

6/10 1-7, 10, 12

1.  $18 \text{ cm}^2$  2. 18 3.  $a=5$   
 $b=10$

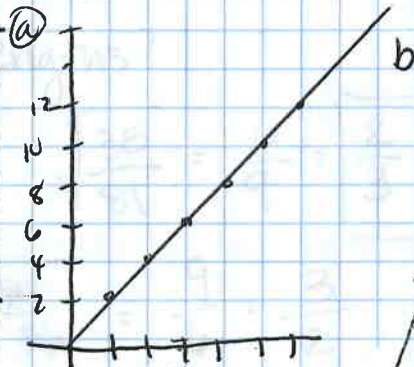
4.  $R=27\pi \text{ cm}$  5.  $\frac{1}{49}$  6. 1:3

7.  $\frac{m^2}{n^2}$  or  $(\frac{m}{n})^2$  10.  $\frac{9}{1}$  ~~18~~

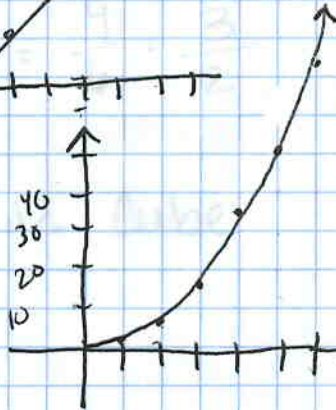
12.  
a)

x	Area
1	2
2	4
3	6
4	8
5	10
6	12

$$a(x) = 2(x)$$



(b)

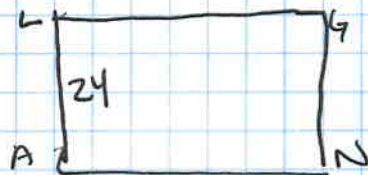


x	Area
1	2
2	8
3	18
4	32
5	50
6	72

$$a(x) = 2x^2$$

#2 RECT ~ ANGL

$$\frac{\text{area RECT}}{\text{area ANGL}} = \frac{9}{16}$$



$$\sqrt{\frac{9}{16}} = \frac{3 \text{ (RECT)}}{4 \text{ (ANGL)}} = \frac{TR}{24} \Rightarrow \frac{3}{4}$$

$$\frac{4TR}{4} = \frac{72}{4} \Rightarrow TR = 18$$