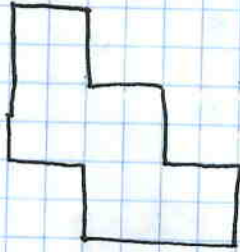


585: 2, 3, 7-14

2. b

3.



7.  $\frac{KN}{AL} = 6$   
 $\frac{AL}{AR} = 10$   
 $\frac{RG}{4}$

8. Same angles

$\frac{180}{192} \neq \frac{150}{165}$  NO

sides not proportional

9.  $\overline{BM} = 30$   
 $\overline{MC} = 21$   
 $\overline{CY} = 42$   
 $\overline{NY} = 21$

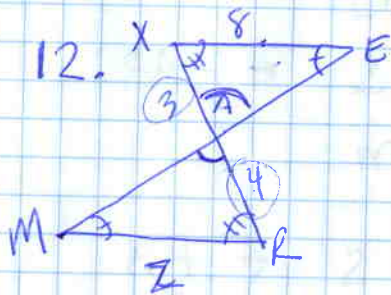
10. yes-  
 angles congruent  
 sides proportional

11.  $x = 6\text{cm}$   
 $y = 3.5\text{cm}$

12.  $z = 10\frac{2}{3}$

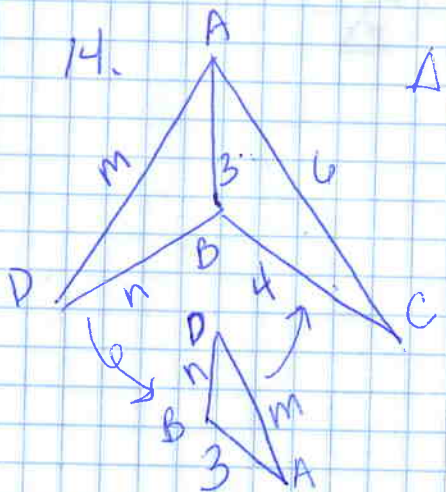
13. yes  
 angles congruent  
 sides proportional

14.  $m = \frac{9}{2}\text{cm}$   
 $n = \frac{9}{4}\text{cm}$



$\Delta RAM \sim \Delta XAE$

$\frac{3}{4} = \frac{8}{z}$       $\frac{3z}{3} = \frac{32}{3}$       $z = \frac{32}{3}$   
 $10\frac{2}{3}$



$\Delta ABC \sim \Delta BDA$

$\frac{4}{3} = \frac{6}{m}$       $\frac{4}{3} = \frac{3}{n}$   
 $4m = 18$       $4n = 9$   
 $m = \frac{18}{4} = \frac{9}{2}$       $n = \frac{9}{4}$