





541: 10, 13

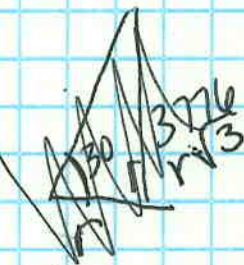
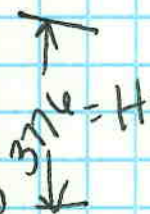
10.

info	height	A pyramid 	□ pyramid 	△ pyramid 	cone 
$b_1=6, b_2=1$ $h=6, r=3$	$H=20$	$V=120 \text{ cm}^3$	$240 \text{ cm}^3$	$260 \text{ cm}^3$	$60\pi \text{ cm}^3$
$b_1=9, b_2=22$ $h=8, r=6$	$H=20$	$240 \text{ cm}^3$	$480 \text{ cm}^3$	$\frac{2480}{3} \text{ cm}^3$	$240\pi \text{ cm}^3$
$b=13, b_1=29$ $h=17, r=8$	$H=24$	$884 \text{ cm}^3$	$1768 \text{ cm}^3$	$2856 \text{ cm}^3$	$512\pi \text{ cm}^3$

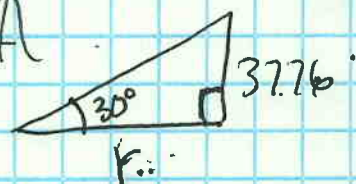
13.  $V \text{ Etna} = 2193 \text{ km}^3$

Etna is larger

$V \text{ Fuji} = 169 \text{ km}^3$



~~$B = \pi r^2 = \pi \left(\frac{r}{3}\right)^2$~~



$3776 \sqrt{3} = r$

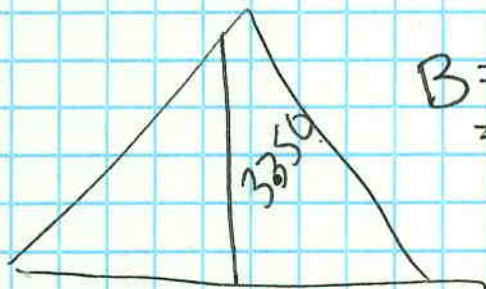
$B = \pi r^2$   $B =$

$r = 6540.224$

$42.774528 \text{ km}^2$

$42.7745 \pi \text{ km}^2$

$V = 53.8 \pi \text{ km}^3$



$B = \pi r^2 = 625 \pi$

$697.9 \pi \text{ km}^3$

50  $r = 25 \text{ km}$   
Etna