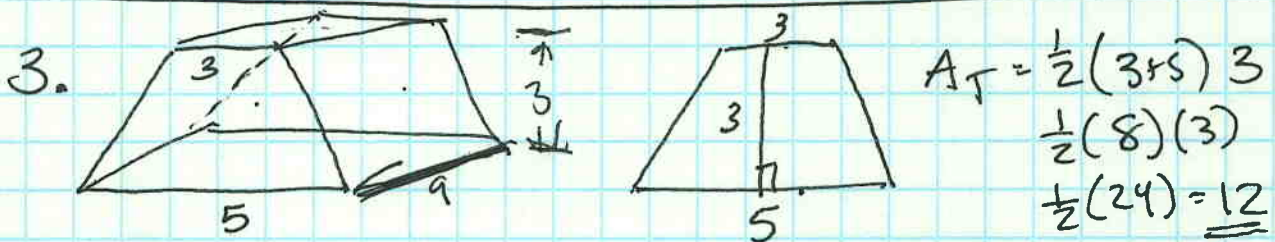


535

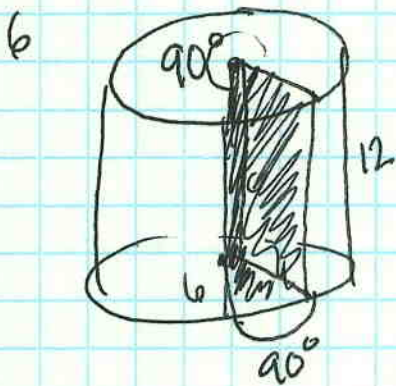
P ~~885~~

10-2-2

HW 1-6, 11-13, 15, 16

Key 1. 72 cm^3 2. 24 cm^3 3. 108 cm^3 4. 502.65 cm^3
 $160\pi \text{ cm}^3$ 5. 113.10 cm^3
 $36\pi \text{ cm}^3$ 6. 1017.88 cm^3
 $324\pi \text{ cm}^3$ 11. $2x^3$ 12. $3\pi r^3$ 13. $13x^3$ 15. 170 yd^3 16. 5100 lbs 

$$V = BH = 12(9) = 108 \text{ cm}^3$$



$$\frac{3}{4} V$$

$$V = \frac{1}{4} V$$

$$V = BH$$

↓
sector
area

$$B = \frac{\theta}{360} (\pi r^2)$$

$$= \frac{270}{360} (36) \pi$$

$$= \frac{3}{4} (36) \pi$$

$$B = 27\pi$$

$$V = BH = 27\pi (12)$$

$$= 324\pi$$

$$\approx 1017.9$$