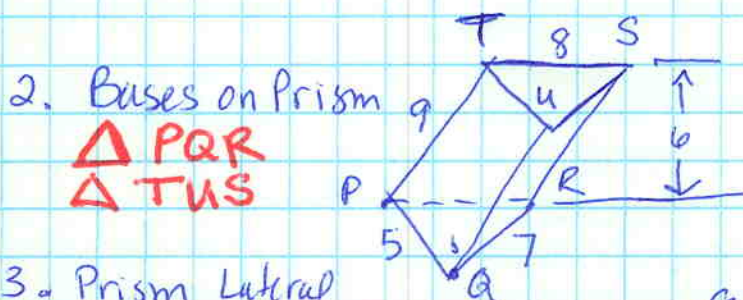


524 1-22

1. A pyramid is a **polyhedron** with one **polygonal** face (called the base), and whose other faces (lateral faces) are **triangles** formed by segments connecting the vertices of the base to a common point (the vertex) not on the base.



3. Prism Lateral faces

$PTUQ, QRSU, TSRP$

4. Prism Lateral Edges
 $\overline{QU}, \overline{RS}, \overline{PT}$

5. Prism height 6

6. Pyramid Base $GNATPY$

7. Vertex Pyramid E

8. Pyramid Lateral Edges $\overline{GE}, \overline{NE}, \overline{AE}, \overline{TE}, \overline{PE}, \overline{YE}$

9. Pyramid height 13cm

10. D 11. L 12. C 13. G 14. B

15. H 16. E 17. A 18. J 19. J

20. M 21. H 22. I

