

488 1-6, 7, 9, 11, 13, 19-20

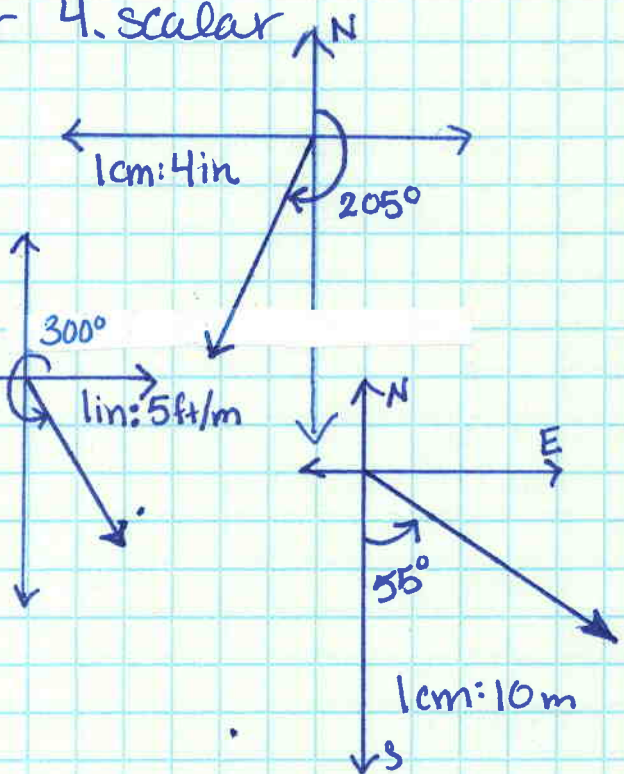
1. scalar 2. scalar 3. vector 4. scalar  
 5. vector 6. vector

7.  $\vec{u} = 13 \text{ in/s}$  at bearing  $205^\circ$

$205^\circ - 180^\circ = 25^\circ$  1cm:4in

9.  $\vec{j} = 5 \text{ ft/m}$  at  $300^\circ$  to horz.

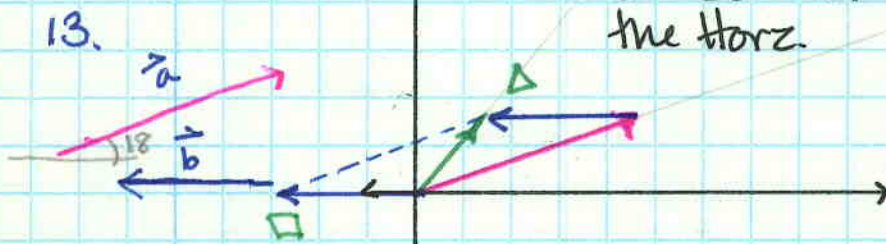
1in:5ft/m



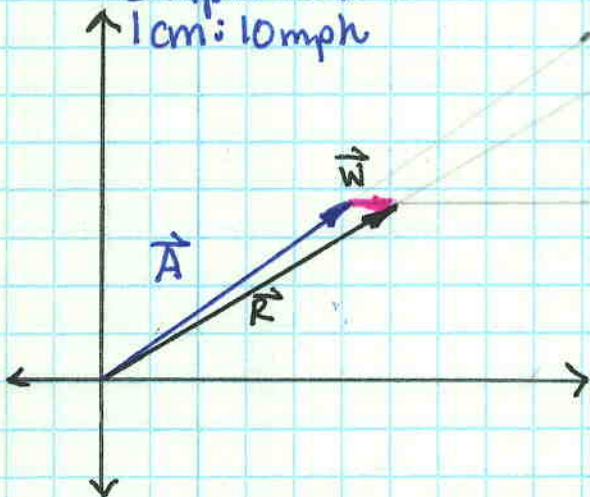
11.  $\vec{m} = 40 \text{ meters}$  at  $S 55^\circ E$

1cm:10m

$\vec{a} + \vec{b} = \frac{1}{2}$   
 at  $50^\circ$  from  
 the horz.



19. Ana  $35^\circ$  to H  
 40 mph  
 5 mph Wind E  
 1cm:10mph



$\vec{R} = 4.5 \text{ cm} @ 30^\circ$   
 $\vec{R} = 45 \text{ mph} @ 30^\circ$

20 N  $60^\circ$  W 12 nm  
 N  $25^\circ$  E 15 nm

